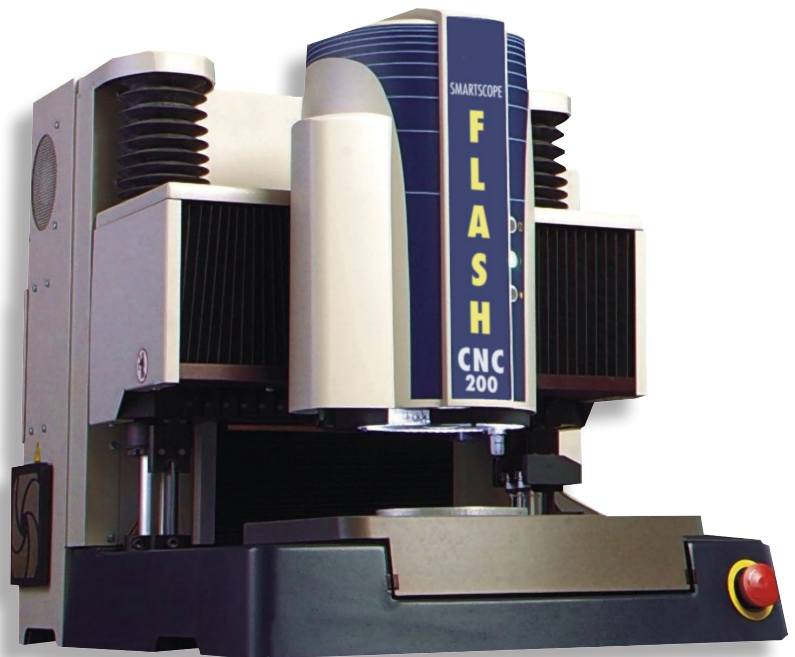


## SmartScope® Flash CNC 200

- **Designed-in accuracy** – Patented† “elevating bridge” design eliminates errors common to other designs
- **Precision optics** – High quality AccuCentric® zoom lens automatically compensates magnification for each zoom position
- **Superb illumination for the best video measurements** – Standard profile light, coaxial surface light, and SmartRing™ light illuminate parts from all angles
- **Multisensor versatility** – Optional touch probe, laser, and micro-probe sensors

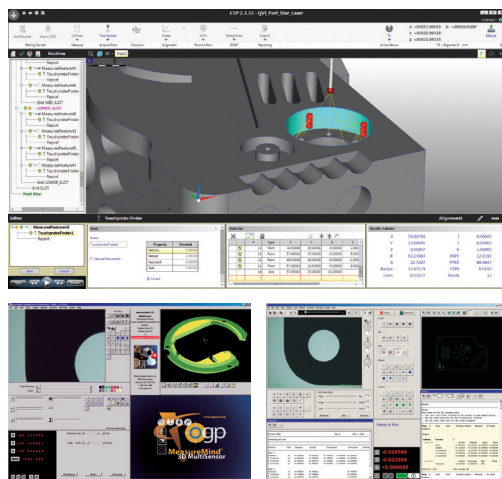
Axis	Travel (mm)
X axis	200
Y axis	200
Z axis	150

**Multisensor Dimensional Measuring System that Fits on a Benchtop**

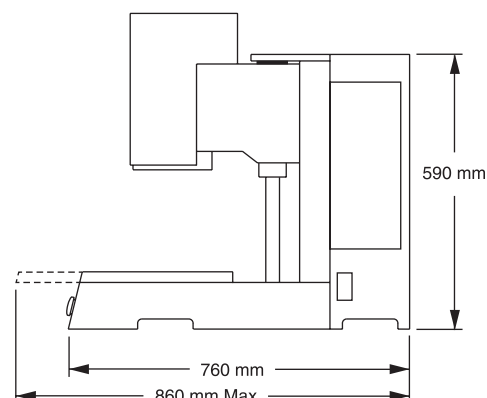
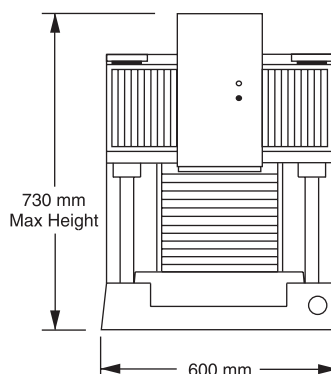


Shown with optional touch probe & QVI TTL laser

# SmartScope® Flash CNC 200



Choose the QVI metrology software best suited to your manufacturing setting — CAD-based ZONE3®, MeasureMind® 3D or Measure-X®.



Machine Weight: 100 Kg  
Crated Weight: 149 Kg

	Standard	Optional
<b>XYZ travel</b>	200 x 200 x 150 mm	
<b>XYZ scale resolution</b>	0.5 µm, with dual Z-axis scales standard	0.1 µm (all axes)
<b>Drive system</b>	DC servo with 4-axis control (X,Y,Z,zoom); with multifunction handheld controller	
<b>Worktable</b>	Hardcoat anodized, with fixture holes, removable stage glass, 16 kg recommended max payload	
<b>Rotary axis (subject to application review by OGP)</b>		Miniature Servo Rotary (MSR), MicroTheta Rotary (MTR)
<b>Optics</b>	AccuCentric® auto-compensating zoom with up to 25 calibrated positions, 1.0x front lens with 64 mm working distance	0.5x, 0.75x, 1.5x, and 2.0x lens attachments; 2.5x and 5.0x high magnification replacement lenses; 2.0x and 5.0x laser lenses (for use with or without optional TTL laser), LED autofocus grid projector; TTL laser adapter (includes laser pointer)
<b>FOV size (std optical configuration)</b>	Measured diagonally, 10.1 mm (low mag) to 1.1 mm (high mag)	
<b>Illumination</b>	Patented <sup>††</sup> LED numerical aperture matching substage, LED coaxial TTL surface, 8 sector/8 ring SmartRing™ LED (white)	
<b>Camera</b>	High resolution color digital metrology camera	
<b>Image processing</b>	256 level grayscale processing with 10:1 subpixel resolution	
<b>Sensor options (contact OGP for possible combinations of sensors)</b>		Touch probe and change rack, on-axis TTL laser (with 2.0x laser lens), Feather Probe™
<b>Controller</b>	Windows® based, with up-to-date processor and on board networking/communication ports	
<b>Controller accessory package</b>		24" flat panel LCD monitor, or dual 24" flat panel LCD monitors; keyboard, 3-button mouse (or user supplied)
<b>Software</b>	<b>QVI Portal, including:</b> <ul style="list-style-type: none"> <li>• Portal Navigator</li> <li>• Independent Calibration Engine (ICE)</li> <li>• Multimedia Content Viewer</li> <li>• SmartLink™</li> </ul>	<b>Metrology software:</b> ZONE3® Express, Prime or Pro; MeasureMind® 3D, Measure-X® <b>Productivity software:</b> MeasureFit® Plus, SmartFit® 3D, SmartProfile® <b>Offline software:</b> ZONE3, MeasureMind 3D, Measure-X
<b>Power requirements</b>	100-120 VAC or 200-240 VAC, 50/60 Hz, 1 phase, 600 W	
<b>Rated environment</b>	Temperature 18-22 °C, stable to ±1 °C; 30-80% humidity; vibration <0.001g below 15 Hz	
<b>Operating environment, safe operation</b>	15-30 °C	
<b>XY area accuracy</b>	$E_2 = (2.0 + 6L/1000) \mu\text{m}^{1,2,3,4}$	
<b>Z linear accuracy</b>	$E_1 = (3.5 + 6L/1000) \mu\text{m}^{1,4}$	$E_1 = (2.5 + 6L/1000) \mu\text{m}^{1,4}$ (with optional 2.0x replacement lens and grid projector, TTL laser, or TP20 or TP200 touch probe)

<sup>†</sup>Patent Number 6,518,996    <sup>††</sup>Patent Number 6,161,940

<sup>1</sup>Where L = measuring length in mm. Applies to thermally stable system in rated environment. Maximum rate of temperature change: 1 °C/hour. Maximum vertical temperature gradient: 1 °C/meter. All optical accuracy specifications at maximum zoom lens setting.

<sup>2</sup>With evenly distributed load up to 5 kg. Depending on load distribution, accuracy at maximum rated load may be less than standard accuracy.

<sup>3</sup>Measured in the standard measuring plane. The standard measuring plane is defined as a plane that is within 25 mm of the worktable surface.

<sup>4</sup>E<sub>1</sub>, Z axis linear and E<sub>2</sub>, XY area accuracy standards are described in QVI Publication Number 790762.



**World Headquarters:** Rochester, NY, USA • 585.544.0400 • [www.ogpnet.com](http://www.ogpnet.com)  
**OGP Shanghai Co, Ltd:** Shanghai, China • 86.21.5045.8383/8989 • [www.smartscope.com.cn](http://www.smartscope.com.cn)  
**OGP Messtechnik GmbH:** Hofheim-Wallau, Germany • 49.6122.9968.0 • [www.ogpmesstechnik.de](http://www.ogpmesstechnik.de)  
**Optical Gaging (S) Pte Ltd:** Singapore • 65.6741.8880 • [www.smartscope.com.sg](http://www.smartscope.com.sg)